

Center City Pediatrics

Instructions for PROXY sending message directly to provider:

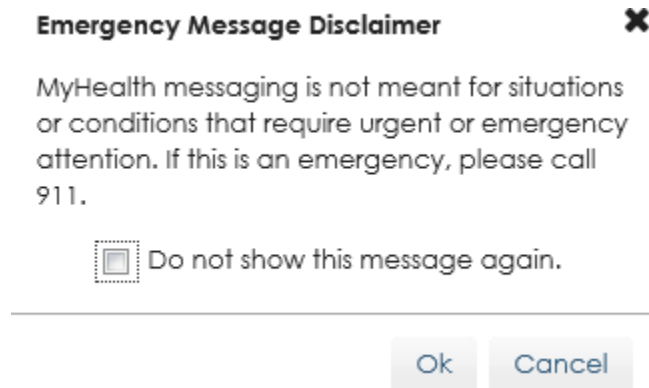
- 1) Login to your FMH account.



- 2) Click on the proxy name (this will be the default) at the top and choose the child for whom you wish to send a message.
- 3) At the top of the screen in green, select "send a message".
 - a. Click here, next to your child's name



- 4) Follow My Health should never be used for medical emergencies or urgent questions that require immediate attention. Choose OK to continue or cancel to stop messaging.



- 5) Choose the physician you wish to message. Please note, only providers that the child has seen in the office are available for messaging.





Center City Pediatrics

6) Enter a subject field

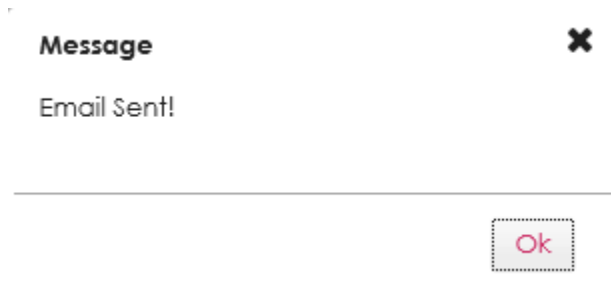
Subject:

7) Type your message

Body:

Characters used: 0 / 1000

8) Hit send.



9) You will get a confirmation of your message.

10) You should expect a response within 3 days.